

OEM
Approved

Solid Cushion OTR Tyres



AT

**Abrasive
Surfaces**

DT

**Off-Road
and Dirt**

RT

**Rocks, Scrap,
and Debris**

SS

**Flat Concrete
and Asphalt**

There is a tread pattern for any job!

NU-AIR TYRE[®] *series* Semi-Pneumatic Tire Technology[™]

Nu-Air Tyre[®] has set the industry standard for high quality Semi-Pneumatic Tyres. You can rely on McLaren's continuous field testing and product improvement to deliver a superior flat-proof air-cushioned OTR tyre with unsurpassed longevity and wear resistance.

• **Stability**

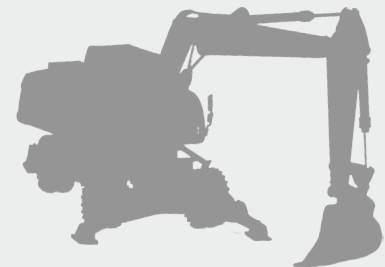
McLaren's new standard of performance delivers greater stability, reduced bouncing, and a much safer operation on any job site. As a result, Nu-Air tyres can handle extreme loads for a variety of earthmoving equipment such as dump trucks, heavy wheel loaders, dozers and other machines.

• **Longevity**

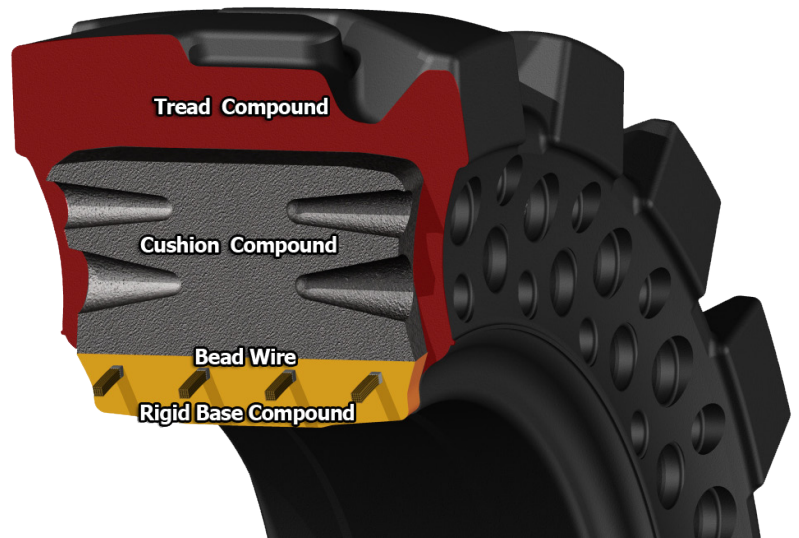
Nu-Air tyres last up to 5,000 flat-free hours with zero downtime. With a perfect mix of flexibility and strength they offer a lower cost per hour than the any pneumatic or foam-filled tyres.

• **Versatility**

McLaren offers a variety of patterns to achieve peak performance on any terrain. They are ideal for heavy duty work in environments with high risk of damage and impact, such as scrap yards, loading fields, and surface mines.



NU-AIR TYRE[®]
series
Semi-Pneumatic Tire Technology[™]



McLaren OTR Tyres - Key Specifications

Tyre Size	Tread Pattern	Tyre Width	Tread Depth	Outer Diameter	Rim Size	Weight with Rim*	Load Capacity
50x13-24	DT	320 mm	107 mm	1,270 mm	8.5"x24"	358 kg	6,800 kg
50x13-24	AT	320 mm	85 mm	1,250 mm	8.5"x24"	384 kg	6,800 kg
53X14-24	DT	350 mm	113 mm	1,340 mm	10"x24"	439 kg	8,000 kg
53X14-24	AT	340 mm	88 mm	1,320 mm	10"x24"	454 kg	8,000 kg
53X14-24	RT	360 mm	118 mm	1,350 mm	10"x24"	477 kg	8,000 kg
17.5x25	DT	440 mm	125 mm	1,340 mm	14"x25"	543 kg	8,500 kg
17.5x25	AT	440 mm	88 mm	1,340 mm	14"x25"	595 kg	8,500 kg
17.5x25	SS	440 mm	-	1,340 mm	14"x25"	646 kg	8,500 kg
20.5x25	AT	520 mm	95 mm	1,480 mm	17"x25"	893 kg	9,600 kg
20.5x25	RT	520 mm	137 mm	1,500 mm	17"x25"	873 kg	9,600 kg
20.5x25	SS	520 mm	-	1,480 mm	17"x25"	972 kg	9,600 kg
23.5x25	DT	580 mm	168 mm	1,620 mm	19.5"x25"	1,130 kg	10,500 kg
23.5x25	AT	590 mm	150 mm	1,610 mm	19.5"x25"	1,207 kg	10,500 kg
23.5x25	SS	590 mm	-	1,610 mm	19.5"x25"	1,312 kg	10,500 kg
26.5x25	DT	670 mm	193 mm	1,750 mm	22"x25"	1,578 kg	14,500 kg
26.5x25	AT	650 mm	188 mm	1,720 mm	22"x25"	1,570 kg	14,500 kg
26.5x25	SS	650 mm	-	1,720 mm	22"x25"	1,705 kg	14,500 kg
29.5x25	AT	740 mm	200 mm	1,870 mm	25"x25"	2,165 kg	18,500 kg
35/65-33	AT	850 mm	197 mm	2,030 mm	28"x33"	2,726 kg	24,000 kg

*Weight may vary based on custom rim specifications